

# AD MODERN ORGANICS



american drew®  
· inspired design ·

Our lives are cluttered. We all feel the need for something clean, authentic and timeless. That's what Modern means for us. Bold lines, honoring the materials and letting them speak for themselves. In our new collections, we've found a way to combine daring and restraint that allows the creation of pieces that are as beautiful and functional today as they will be 100 years from now.

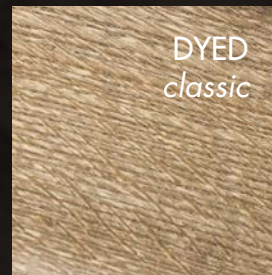
In a search for just the right vibe, AD Modern found its beginnings in an unconventional way. In fact, there was no piece of furniture to get "inspiration" from, no finish panel to replicate, and no antique to reproduce. The inspiration for AD Modern came more in the form of cool places than from existing design. We considered our favorite boutique hotels, trendy restaurants, and of course, our favorite outdoor spaces where nature is best on display.

To create the vibe, we started with clean lines to create the frame of the structure. This allows the character of the wood to stand out –

juxtaposed with the deep colors of the finishes. Finally, each piece has been carefully accessorized using various metal, glass, textile, or stone elements.

## FREE THE GRAIN

Nothing is more authentic and timeless than nature. To reveal the unaltered character of nature's most beautiful materials, AD Modern has been designed utilizing fuming wood and dying wood — two processes that have been all but lost to modern industrialization. These techniques create deep color tones without the use of conventional stains, sealers, and glazes that are applied onto and "cover" the wood.



600-411 BERKLEY OPEN NIGHTSTAND



## ORGANICS

We don't finish the wood. We help it become what it was meant to be, not with tricks, but with techniques that coax the beauty out of it rather than enforce an unnatural conformity on an organic varied material.

Inspired by the natural beauty of wood, we make use of a process that has been left behind by the demands of large-scale, modern manufacturing. First discovered when unfinished oak furniture was enclosed in a barn during a cold winter, wood fuming was found to add a rich brown color without altering or covering the wood's

grain. The tannins in the wood had reacted with naturally occurring elements such as ammonia in the enclosed space. Today we are able to replicate this process in a similar way using a pressurized chamber to control the color. Once the color tone is achieved, careful attention is given to level and match the color without distorting the natural character of these beautiful materials.



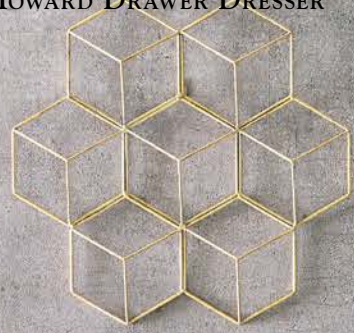
The fumed oak and fumed olive ash wood is then presented on the clean, simple lines that make this collection the functional artwork of the home.

600-420 HAYS THREE DRAWER NIGHTSTAND

600-313R LUNA QUEEN PANEL BED 5/0

600-030 HOLT LANDSCAPE MIRROR

600-130 HOWARD DRAWER DRESSER



600-130 HOWARD  
DRAWER DRESSER (detail)



600-030 HOLT LANDSCAPE MIRROR  
600-130 HOWARD DRAWER DRESSER



600-915 KERN DRAWER END TABLE

RIGHT:  
600-131 SPENCER DRAWER/  
DOOR DRESSER (inside detail)



600-313 LUNA QUEEN PANEL BED HEADBOARD 5/0 (headboard light on)



600-313 LUNA QUEEN PANEL BED HEADBOARD 5/0  
(headboard light off)

LEFT:  
600-030 HOLT LANDSCAPE MIRROR  
600-131 SPENCER DRAWER/DOOR DRESSER



600-220 LAUREL BUNCHING CABINET

OPPOSITE PAGE:  
600-215 FAULK FIVE DRAWER CHEST

600-326R FREEMONT KING CANOPY BED 6/6

600-030 HOLT LANDSCAPE MIRROR

600-131 SPENCER DRAWER/DOOR DRESSER

600-411 BERKLEY OPEN NIGHTSTAND





600-326 FREEMONT KING CANOPY BED HEADBOARD 6/6 (headboard detail)

OPPOSITE PAGE:  
600-420 HAYS THREE DRAWER NIGHTSTAND







600-701R CAMBY ROUND PEDESTAL DINING TABLE

600-636 BENTON SIDE CHAIR

600-637 BENTON ARM CHAIR

600-858 GILLIAM CREDENZA



600-701 CAMBY ROUND PEDESTAL  
DINING TABLE-BASE (base detail)





ABOVE:  
600-858 GILLIAM CREDENZA  
(inside detail)



600-939 COWLEY ETAGERE

OPPOSITE PAGE:  
600-858 GILLIAM CREDENZA



**600-702R BANDON  
RECTANGULAR DINING TABLE**  
*(table top detail)*



**600-702R BANDON RECTANGULAR  
DINING TABLE**

**600-636 BENTON SIDE CHAIR**

**600-637 BENTON ARM CHAIR**



600-940 RISDEN DESK (pull out desk detail)



600-940 RISDEN DESK  
600-636 BENTON SIDE CHAIR

OPPOSITE PAGE:  
600-636 BENTON SIDE CHAIR  
600-637 BENTON ARM CHAIR



600-637 BENTON ARM CHAIR  
600-636 BENTON SIDE CHAIR  
600-702R BANDON RECTANGULAR  
DINING TABLE  
600-939 COWLEY ETAGERE  
600-858 GILLIAM CREDENZA





600-915 KERN DRAWER  
END TABLE

600-918 WINKLER END TABLE

600-585 CONRAD  
ENTERTAINMENT CONSOLE

600-910 OGDEN  
RECTANGULAR  
COCKTAIL TABLE

600-915 KERN DRAWER  
END TABLE





600-585 CONRAD ENTERTAINMENT CONSOLE

OPPOSITE PAGE:  
600-918 WINKLER END TABLE





600-910 OGDEN RECTANGULAR  
COCKTAIL TABLE

600-585 CONRAD ENTERTAINMENT CONSOLE



600-926 TIMOTHY CONSOLE TABLE



600-912 BREVARD LIVE  
EDGE COCKTAIL TABLE

603-921 DOVER ROUND  
LAMP TABLE

603-917 BLAINE  
CHAIRSIDE TABLE\*

600-926 TIMOTHY  
CONSOLE TABLE\*



600-912 BREVARD LIVE EDGE  
COCKTAIL TABLE

603-917 BLAINE  
CHAIRSIDE TABLE\*

\*603 items are part of the AD Modern Classics collection,  
please refer to that catalog for more information.



Fumed Quartered Oak Veneer



Fumed Olive Ash Veneers



Dark Stained White Oak Veneer



Fumed Quartered Oak Veneer (case sides)

### 600 AD MODERN ORGANICS

#### FUMED QUARTER OAK VENEERS, FUMED OLIVE ASH VENEERS

Soft-close drawer glides, soft-close door hinges, leveling feet on most cases, select items feature: ambient LED lighting, power receptacles for charging (traditional power and USB), Sunbrella performance fabrics

*Finishes ordered at different times are not guaranteed to match. Woods have grain and color variations due to growth patterns of each tree.*

*The result is a beautiful and unique piece. Due to these variations, finishes on individual pieces are not guaranteed to match.*

*The finish shown here has been reproduced as accurately as photographic and printing technologies allow. For the truest representation, please contact your American Drew dealer.*

**IMPORTANT NOTE:** The natural look of AD Modern comes from materials and techniques chosen for their unique characteristics.

Like a fingerprint, each piece features one-of-a-kind grain patterns and may contain a range of color tones.

Here are a few desirable characteristics that may be found in AD Modern:



Flakey Oak

Heavy flake (natural lighter tone grain) is one of the most desirable character markings that can be found in Oak. AD Modern seeks to include these characteristics. Due to the natural variations of this wood, heavy flake amounts will vary.



Color Tone Variations

Natural wood color tone variations represent the natural variations between individual boards. Additionally, color variations among sap wood and heart wood which are exposed through the veneer fuming process, may occur within individual boards.



**600-030 HOLT LANDSCAPE MIRROR**

W45-5/8 D1-7/8 H39-5/8

Beveled mirror

pages: 7, 8, 12/13



**600-130 HOWARD DRAWER DRESSER**

W68 D20 H33

Six drawers, brown jewelry tray in top right drawer, removable drawer dividers in top left drawer, bottom two drawers are Cedar lined, adjustable levelers

page: 7



**600-131 SPENCER DRAWER / DOOR DRESSER**

W60 D20 H42

Four drawers, one door, adjustable levelers, two adjustable shelves, bottom drawer is Cedar lined, recessed area in back behind door with a two outlet plug and USB charging, adjustable shelf size (center position) behind doors: W17 D16½, area behind doors without shelf: W17, D16½ H36

pages: 8, 12/13



**600-215 FAULK FIVE DRAWER CHEST**

W45 D20 H58

Five drawers, adjustable levelers, bottom drawer is Cedar lined

pages: 10



**600-220 LAUREL BUNCHING CABINET**

W42 D20 H50

Three drawers, two doors, adjustable levelers, adjustable bronze tempered glass shelf, bottom drawer is Cedar lined Area behind door w/o shelf: W40¼ D17¾ H20-5/8 Adjustable shelf size (behind door) with shelf in center position: W40½ D17¾

pages: 11



**600-313R LUNA PANEL QUEEN BED 5/0**

W64½ D87 H54

Consists of:

-313 LUNA PANEL BED HEADBOARD 5/0

W64½ D2½ H54

LED light strip in top of headboard

-314 LUNA PANEL BED FOOTBOARD 5/0

W64 D2½ H16¼

-R42 BOLT ON RAILS 5/0-6/6

W82 D2¼ H10

pages: 6, 9



**600-316R LUNA KING PANEL BED 6/6**

W81 D87 H54

Consists of:

-316 LUNA PANEL BED HEADBOARD 6/6

W81 D2½ H54

LED light strip in top of headboard

-317 LUNA PANEL BED FOOTBOARD 6/6

W81 D2½ H16¼

-R42 BOLT ON RAILS 5/0-6/6

W82 D2¼ H10



**600-317R LUNA CAL KING PANEL BED 6/0**  
 W87 D91 H54  
 Consists of:  
**-316 LUNA PANEL BED HEADBOARD 6/6**  
 W81 D2½ H54  
 LED light strip in top of headboard  
**-317 LUNA PANEL BED FOOTBOARD 6/6**  
 W81 D2½ H16¼  
**-R44 BOLT ON RAILS 6/0**  
 W86 D3-3/8 H10



**600-324R FREEMONT QUEEN CANOPY BED 5/0**  
 W68½ D88½ H90  
 Consists of:  
**-324 FREEMONT CANOPY BED HEADBOARD 5/0**  
 W68½ D3¼ H90  
**-325 FREEMONT CANOPY BED FOOTBOARD 5/0**  
 W68½ D3¼ H90  
**-991 FREEMONT CANOPY BED FRAME 5/0**  
 W68½ D88½ H90  
**-R53 BOLT ON RAILS**  
 W82 D3¼ H10¼



**600-326R FREEMONT KING CANOPY BED 6/6**  
 W88½ D88½ H90  
 Consists of:  
**-326 FREEMONT CANOPY BED HEADBOARD 6/6**  
 W84½ D3¼ H90  
**-327 FREEMONT CANOPY BED FOOTBOARD 6/6**  
 W84½ D3¼ H90  
**-992 FREEMONT CANOPY BED FRAME 6/6**  
 W84½ D88½ H90  
**-R53 BOLT ON RAILS**  
 W82 D3¼ H10¼  
*pages: 12/13, 14/15*



**600-327R FREEMONT CAL KING CANOPY BED 6/0**  
 W92½ D92½ H90  
 Consists of:  
**-326 FREEMONT CANOPY BED HEADBOARD 6/6**  
 W84½ D3¼ H90  
**-327 FREEMONT CANOPY BED FOOTBOARD 6/6**  
 W84½ D3¼ H90  
**-993 FREEMONT CANOPY BED FRAME 6/0**  
 W84½ D92½ H90  
**-R59 BOLT ON RAILS 6/0**  
 W86 D3¼ H10¼



**600-411 BERKLEY OPEN NIGHTSTAND**  
 W25 D18 H30  
 One drawer, lower shelf, recessed area in back behind drawer with two outlet plug and USB charging  
*pages: 4, 13*



**600-420 HAYS THREE DRAWER NIGHTSTAND**  
 W36 D19 H30  
 Three drawers, recessed area in back behind drawer with a two outlet plug and USB charging, Cedar lined bottom drawer, adjustable levelers  
*pages: 6/7, 15*



**600-585 CONRAD ENTERTAINMENT CONSOLE**  
 W78 D19 H27  
 Two drawers, two doors, two adjustable shelves, cord exits, component opening, recessed area in back behind door with a three outlet plug, adjustable levelers, adjustable shelf behind doors - shelf size: W15¼ D16, opening in center: W44 D15 H5, area behind doors without shelf: W15½ D16-11/16 H18  
*pages: 26/27, 28*



**600-636 BENTON SIDE CHAIR**  
 W21¾ D25-9/16 H36  
 Upholstered seat and back  
 Seat Height: 19  
 Seat Depth: 19  
*pages: 16/17, 20/21, 22/23*



**600-637 BENTON ARM CHAIR**  
 W24 D25 5/8 H36  
 Upholstered seat and back  
 Seat Height: 19  
 Seat Depth: 19  
 Arm Height: 24-9/16  
*pages: 16/17, 20/21, 22/23*



**600-701R CAMBY ROUND PEDESTAL DINING TABLE**  
 Dia 60 H30  
 Consists of:  
**-701 CAMBY ROUND PEDESTAL DINING TABLE-TOP**  
 Dia 60 H2-3/8  
**-B01 CAMBY ROUND PEDESTAL DINING TABLE-BASE**  
 Dia 32-7/16 H27-5/8  
 Adjustable levelers, metal burnished brass trim  
*pages: 16/17*



**600-702R BANDON RECTANGULAR DINING TABLE**  
 W82 D42 H29½  
 Consists of:  
**-702 BANDON RECTANGULAR DINING TABLE-TOP**  
 W82 D42 H3¾  
**-B02 BANDON RECTANGULAR DINING TABLE-BASE**  
 W44 D17¾ H25¾  
 Two 20 in leaves, extends to 122", adjustable levelers  
*pages: 20/21, 24/25*



**600-858 GILLIAM CREDENZA**  
 W72 D20 H34  
 Four doors, two interior drawers behind right side facing doors, one adjustable wood shelf behind left side facing doors, adjustable levelers, brown silverware insert in drawers, recessed area in back behind drawer with a three outlet plug and USB charging  
*pages: 17, 18, 24*



**600-910 OGDEN RECTANGULAR COCKTAIL TABLE**  
 W52 D28 H19  
 Wood top, adjustable levelers  
*pages: 26/27, 30/31*



**600-912 BREVARD LIVE EDGE COCKTAIL TABLE**  
 W53 D26¾ H17½  
 Fumed Olive Ash Veneers on live edge top, acrylic base, metal burnished brass trim  
*pages: 32/33*



**600-926 TIMOTHY CONSOLE TABLE**  
 W62 D16 H30  
 Wood shelf in center, adjustable levelers,  
*pages: 31, 33*



**600-940 RISDEN DESK**  
 W58 D26 H30  
 Wood top, two drawers, tempered bronze glass in center above opening, adjustable levelers, removable pencil tray in drawers, pull-out shelf in center, opening size: W29-7/8 D24¾ H3, knee hole size: H24-3/8  
*pages: 22*



**600-915 KERN DRAWER END TABLE**  
 W18 D28 H24  
 Two drawers, file storage, open area size: H11 D68½ H18-7/8  
*pages: 7, 16*



**600-939 COWLEY ETAGERE**  
 W40 D17 H82  
 Eight wood shelves  
 Shelf sizes (top to bottom)  
 Shelf 1: W31 D14½ H6  
 Shelf 2: W17½ D14½ H5  
 Shelf 3: W31 D14½ H6  
 Shelf 4: W31 D14½ H11¾  
 Shelf 5: W17½ D14½ H5½  
 Shelf 6: W31 D14½ H8¾  
 Shelf 7: W17½ D14½ H7¾  
 Bottom Shelf: W31 D14½ H11-5/16  
 Burnished brass metal frame, fumed White Oak veneer shelves  
*pages: 19, 25*



**600-918 WINKLER END TABLE**  
 W28½ D20 H26½  
 Tempered bronze glass shelf in center, adjustable levelers,  
*pages: 27, 29*

a m e r i c a n d r e w®

a L A  B O Y company

**SKU: SA-C600**  
printed February 2017

All photographs, illustrations and specifications in this catalog are based on the latest product information available at the time of printing. American Drew reserves the right to discontinue items without notice and to make changes to colors, materials, equipment and specifications at any time. This catalog is intended to be distributed to authorized dealers, and possession does not constitute authority to purchase.

Not responsible for typographical errors.

© 2017 American Drew

PRINTED IN THE USA.